

DFFB Antibody (Center)
Purified Rabbit Polyclonal Antibody (Pab)
Catalog # AW5135**Specification**

DFFB Antibody (Center) - Product Information

Application	IHC-P, WB, FC,E
Primary Accession	O76075
Reactivity	Human
Predicted	Mouse, Rat
Host	Rabbit
Clonality	polyclonal
Calculated MW	H=39,31;M=39;Rat=40 KDa
Isotype	Rabbit IgG
Antigen Source	HUMAN

DFFB Antibody (Center) - Additional Information**Gene ID** 1677**Antigen Region**
203-238**Other Names**

DNA fragmentation factor subunit beta, 3---, Caspase-activated deoxyribonuclease, CAD, Caspase-activated DNase, Caspase-activated nuclease, CPAN, DNA fragmentation factor 40 kDa subunit, DFF-40, DFFB, CAD, DFF2, DFF40

Dilution

IHC-P~~1:25
WB~~1:1000
FC~~1:25

Target/Specificity

This DFFB antibody is generated from a rabbit immunized with a KLH conjugated synthetic peptide between 203-238 amino acids from the Central region of human DFFB.

Format

Purified polyclonal antibody supplied in PBS with 0.09% (W/V) sodium azide. This antibody is purified through a protein A column, followed by peptide affinity purification.

Storage

Maintain refrigerated at 2-8°C for up to 2 weeks. For long term storage store at -20°C in small aliquots to prevent freeze-thaw cycles.

Precautions

DFFB Antibody (Center) is for research use only and not for use in diagnostic or therapeutic procedures.

DFFB Antibody (Center) - Protein Information

Name DFFB

Synonyms CAD, DFF2, DFF40

Function

Nuclease that induces DNA fragmentation and chromatin condensation during apoptosis. Degrades naked DNA and induces apoptotic morphology.

Cellular Location

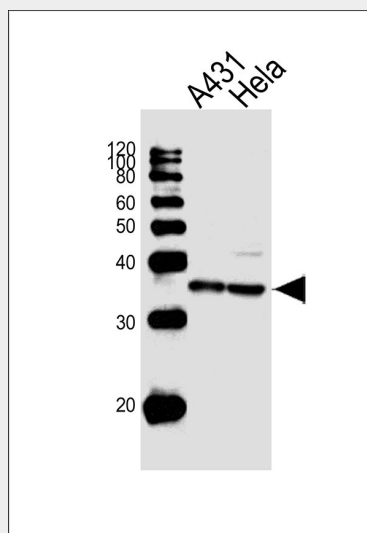
Cytoplasm. Nucleus.

DFFB Antibody (Center) - Protocols

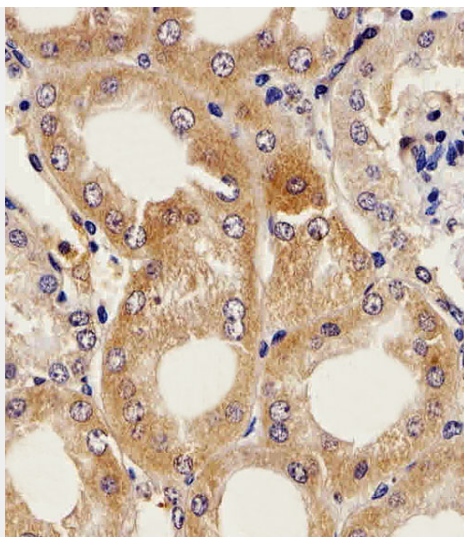
Provided below are standard protocols that you may find useful for product applications.

- [Western Blot](#)
- [Blocking Peptides](#)
- [Dot Blot](#)
- [Immunohistochemistry](#)
- [Immunofluorescence](#)
- [Immunoprecipitation](#)
- [Flow Cytometry](#)
- [Cell Culture](#)

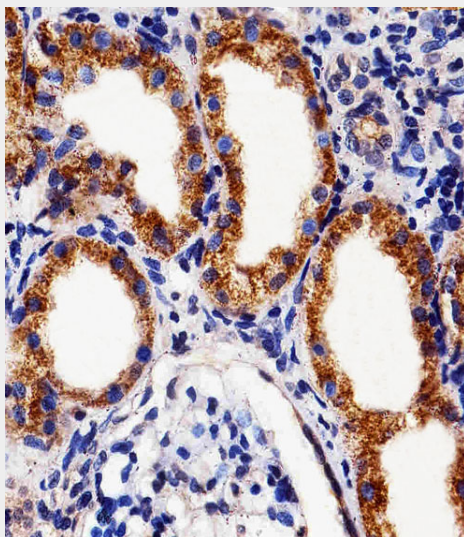
DFFB Antibody (Center) - Images



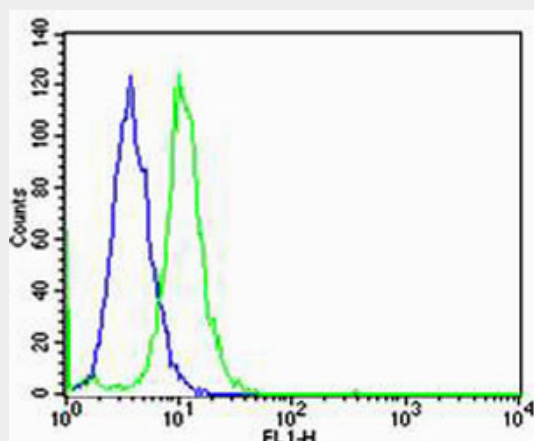
Western blot analysis of lysates from A431, HeLa cell line (from left to right), using DFFB Antibody (Center) (Cat. #AW5135). AW5135 was diluted at 1:1000 at each lane. A goat anti-rabbit IgG H&L (HRP) at 1:10000 dilution was used as the secondary antibody.



Immunohistochemical analysis of paraffin-embedded M.kidney section using DFFB Antibody (Center)(Cat#AW5135). AW5135 was diluted at 1:25 dilution. A peroxidase-conjugated goat anti-rabbit IgG at 1:400 dilution was used as the secondary antibody, followed by DAB staining.



Immunohistochemical analysis of paraffin-embedded H.kidney section using DFFB Antibody (Center)(Cat#AW5135). AW5135 was diluted at 1:25 dilution. A peroxidase-conjugated goat anti-rabbit IgG at 1:400 dilution was used as the secondary antibody, followed by DAB staining.



Flow cytometric analysis of Hela cells using DFFB Antibody (Center)(green, Cat#AW5135) compared to an isotype control of rabbit IgG(blue). AW5135 was diluted at 1:25 dilution. An Alexa Fluor® 488 goat anti-rabbit IgG at 1:400 dilution was used as the secondary antibody.

DFFB Antibody (Center) - Background

Nuclease that induces DNA fragmentation and chromatin condensation during apoptosis. Degrades naked DNA and induces apoptotic morphology.

DFFB Antibody (Center) - References

Liu X.,et al.Proc. Natl. Acad. Sci. U.S.A. 95:8461-8466(1998).
Mukae N.,et al.Proc. Natl. Acad. Sci. U.S.A. 95:9123-9128(1998).
Halenbeck R.,et al.Curr. Biol. 8:537-540(1998).
Nakagawara A.,et al.Submitted (JUN-1999) to the EMBL/GenBank/DDBJ databases.
Ota T.,et al.Nat. Genet. 36:40-45(2004).